

ERATH COUNTY

United
Way



TM

2022

ANNUAL REPORT

A Message from

Leadership

For over half a century, Erath County United Way has been at the forefront of addressing some of the most pressing issues in our community, guided by our steadfast mission to improve the lives of our most vulnerable residents. Despite the turbulence and uncertainty brought about by the pandemic, our commitment to serving the community remains unwavering.

The past two years have been a testament to the resilience and dedication of our community, as we have worked tirelessly to provide support and resources to those in need. From pandemic response programs to new initiatives to address anxiety, depression, and food insecurities through Erath County Community Bridges. Our local United Way has remained focused on filling gaps in services. We have provided vital funding to over 16 local nonprofits and worked with community partners to ensure that support reaches those who need it most.

As we reflect on our 51-year journey, it is clear that the story of Erath County United Way is the story of our community. The collective efforts of our volunteers, donors, and community partners have allowed us to make a lasting impact in Erath County and beyond. And as we move forward, we are excited to continue writing this story with you. On behalf of Erath County United Way's staff and Board of Directors, thank you for your support in 2022 and for your continued commitment in 2023 and beyond.

We would also like to express our deepest gratitude to InterBank for their generous support in donating their offices for us to use for work. Your generosity has provided us with a safe and comfortable space to continue our mission and positively impact the community. Your commitment to giving back to society is truly inspiring and we are honored to have your support. Thank you once again for your invaluable contribution to our organization.

Warm regards,



Lisa Scroggins
Executive Director



Melissa Divin
Board President

2022 IMPACT AGENDA



EDUCATION

Access to a quality education is essential for success in life. However, millions of children and youth lack the support they need to succeed in school and secure a good job. Our goal is to ensure that all kids are ready to learn, supported through school, and able to complete post-secondary education that leads to a sustainable career.

IN THE EDUCATION IMPACT AREA, UNITED WAY SUPPORTS:

7 Programs **3** Live United Scholarships **3,514+**



people in Erath County were impacted by our funded Education programs

HEALTH

Accessing health services should never be hindered by a person's zip code or income, as it often is for many people. It is our aim to provide individuals with access to healthcare so they can improve their health.

IN THE HEALTH IMPACT AREA, UNITED WAY SUPPORTS:

5 Programs **1,473+**



people in Erath County were impacted by our funded Education programs

FINANCIAL STABILITY

Financial stability is the foundation for a better future. We empower people with the necessary resources and opportunities to enhance their own lives and those of their children. Our objective is to ensure that everyone can benefit from all available income support and resources.

IN THE FINANCIAL STABILITY IMPACT AREA UNITED WAY SUPPORTS:

4 Programs **4,783+**



people in Erath County were impacted by our funded Education programs

YOUR 2023 *Executive Committee*



Melissa Divin

President/Chair

Melissa Divin Consulting

"My goal as a board member is to make wise decisions and use the funds we have been entrusted with to assist as many people in Erath County as possible."



Marcy Derrick

Vice-President/Campaign Chair

Texas Health Resources

"My goal as a board member is to serve the community and board by continually seeking excellence and making a difference in Erath County. The dedicated group at ECUW strives to explore all opportunities to raise money and help others. It is a true honor to serve in this role."



Jamie Sanderson

Campaign Co-Chair

First Financial Bank

"My goal as a board member of United Way is to utilize my time to give back as much as possible."



Shelley Gilliland

Past President

Lone Star Ag Credit

"My goal as a board member is to take an active role in identifying the needs of the Erath County community, assist in obtaining the resources needed to meet those needs, educate the community on Erath County United Way, and continue to encourage others to support Erath County United Way."

MEET OUR 2023 BOARD OF DIRECTORS

The guidance and support of our board members have a positive impact on our organization and community. We appreciate their continuous dedication to Erath County United Way.



PRESIDENT
MELISSA DIVIN
Melissa Divin Consulting



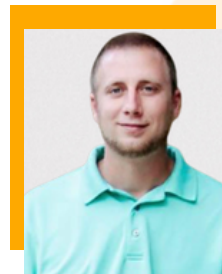
**VICE PRESIDENT/
CAMPAIGN CHAIR**
MARCY DERRICK
Texas Health Resources



CAMPAIGN CO-CHAIR
JAMIE SANDERSON
First Financial Bank



PAST PRESIDENT
SHELLEY GILLILAND
Lone Star Ag Credit



CRAIG ALLEN
*Shade Tree Insurance
Agency, LLC*



NICOLE BASKETT
*Baskett Mortgage
Services, LLC*



CHRISTINA CASTILLO
BMV Wealth Management



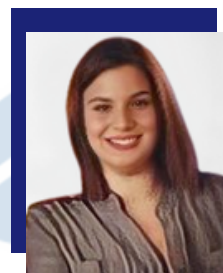
CHAD GILLEY
InterBank



KATHY HAMPTON
Stephenville ISD



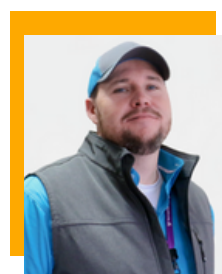
MIKE MELTON
Bruner Auto Family



SAMANTHA OSMOTHERLY
Schreiber Foods



DAVID PEREZ
Perez Construction



JASON RIPLEY
Technip FMC



AMY TROUTMAN
F&M Bank



CONNIE WOOLEY
TexasBank



LISA SCROGGINS
EXECUTIVE DIRECTOR



WHAT WE



***IN 2022, ERATH COUNTY UNITED
WAY FUNDED 16 LOCAL
PARTNER AGENCIES***

Erath County United Way raises money to help fund a variety of local non-profit social service agencies that directly serve the residents of Erath County, improving the quality of life for us all.

Our Annual Campaign raises funds to support various agencies that are dedicated to fulfilling their unique missions. Erath County United Way strives to ensure that everyone has access to the building blocks for a good life, which include education, health, and financial stability. These essential components pave the way for a better future, such as a quality education that leads to a stable job, sufficient income to support a family through retirement, and access to quality healthcare services.

IMPACT BY NUMBERS



COMMUNITY SUPPORT

**Basic Needs Ministry
Dublin Goodfellows
H.O.P.E. Inc.
Meals on Wheels of Erath County
The Love Basket**

\$65,860+



YOUTH SUPPORT

**Backpack Buddies of Erath County
4-H
STAR Council
Stephenville School Supply Project
Treehouse Afterschool Program**

\$20,490+



VICTIM'S ADVOCACY SUPPORT

**CASA
Erath County Child Welfare Board
Paluxy River Children's Advocacy Center
Cross Timbers Family Services**

\$41,520+



SPECIAL SERVICES SUPPORT

**Disabled American Veterans, Chapter 234
T.R.E.A.T.**

\$21,257+

COMMUNITY IMPACT



Erath County United Way partnered with DoorDash and local food pantries to better assist those who are in need. This service delivered food and other essential items and is completely free of charge for the clients and local pantries. This grant allows for us to schedule dashers through DoorDash to pick up and drop off food directly to the clients from the pantries. Our mission is for individuals who are sick, homebound, without transportation, etc. to receive groceries and essential items from the local pantries, and overall make an impact on their everyday lives.

900

DELIVERIES

266

UNIQUE HOUSEHOLDS

In August 2022, Erath County United Way was awarded a grant to provide dog and cat food to anyone in need in Stephenville. Items were delivered by DoorDash to client's homes all free of charge. Our Pet Food Program team had also prepared adoption bags for the Erath County Humane Society. Animal shelters can use these bags to help make the adoption process easier, equipping the new pet "parents" with a starter supply of essentials and goodies (leash, brush, food, water bowl, blankets & toys



PET FOOD PROGRAM

2700

POUNDS OF FOOD

200+

FAMILIES & INDIVIDUALS



TOWER GARDENS



Erath County United Way has donated several tower gardens to the local schools and organizations in order to promote sustainable agriculture and encourage healthy eating habits among the students and residents. Erath County Community Bridges has provided gardens to the following locations: Erath County Senior Citizen Center, White Horse Christian Academy, Dublin ISD, Huston Academy, Dublin Public Library, Stephenville ISD, and Huckabay ISD. Raised garden beds were also provided for Bunker Hill Senior Community and Stephenville Crossing.

“

WE ARE CURRENTLY GROWING BASIL, LETTUCE, AND KALE. IT HAS BEEN FUN TO WATCH THEM GROW AND CAN'T WAIT UNTIL THEY ARE READY FOR US TO USE!

”

Wendy Ivey
Culinary Arts Instructor

STEPHENVILLE SCHOOL SUPPLY PROJECT



The Stephenville School Supply Project is a community effort aimed at ensuring that students in the Stephenville Independent School District have the necessary school supplies to succeed. The Stephenville School Supply Project has the support of Erath County United Way and Erath County Community Bridges, which we are pleased to sponsor. About 650 backpacks filled with necessary school materials were packed and distributed as part of this effort for students in the Stephenville Independent School District.

“

"RECEIVING THESE SCHOOL SUPPLIES IS MORE THAN JUST A DONATION, IT'S A REMINDER THAT WE'RE NOT ALONE IN THIS JOURNEY. AS A SINGLE MOM OF THREE, I SOMETIMES FEEL LIKE I'M CARRYING THE WEIGHT OF THE WORLD ON MY SHOULDERS, BUT SEEING THE COMMUNITY COME TOGETHER TO SUPPORT US GIVES ME THE STRENGTH TO KEEP GOING AND THE HOPE THAT MY KIDS WILL HAVE A BRIGHTER FUTURE."

”

Impacted Mother of 3
Stephenville School Supply Project

CARAVAN FURNITURE DONATION



The new owner of Caravan Inn had selected Erath County United Way, Erath County Community Bridges, and H.O.P.E. Inc. as the designated coordinators for the free distribution of furniture, appliances, and linens. Because of this, 30 families in the area were able to receive much-needed support during their time of need. These donations were to make a significant difference in the lives of those who were struggling to make ends meet, particularly those who may have recently experienced a crisis or hardship.

“

MY DAUGHTER'S A SINGLE MOM WITH THREE LITTLE ONES, AND OVER THE SUMMER, I'VE BEEN TAKING CARE OF THEM WHILE SHE'S BEEN WORKING. BUT THINGS HAVE BEEN TIGHT, AND WE DIDN'T HAVE A PLACE FOR THEM TO SLEEP. THEN ECCB HOOKED ME UP WITH SOME GAS CARDS AND SENT ME OVER TO H.O.P.E, WHERE THEY DIDN'T JUST GIVE US FURNITURE, BUT ALSO FOOD AND DIAPERS. IT'S BEEN A REAL HELP FOR US, AND WE'RE GRATEFUL FOR EVERY LITTLE BIT.

”

Stephanie Holloway
ECCB Client

STEPHENVILLE COMMUNITY PANTRY & DUBLIN MOBILE PANTRY



Erath County United Way has demonstrated its commitment to addressing food security in our community by partnering with the Stephenville Community Pantry and Dublin Mobile Pantry. Through this partnership, Erath County United Way is able to help provide additional protein to those who may not have access to it otherwise. By working with these pantries, the Erath County United Way is able to leverage their expertise and resources to maximize the impact of its efforts.

“

THE MAIN IDEA OF THE STEPHENVILLE COMMUNITY PANTRY IS TO "GIVE FRESH FRUITS AND VEGETABLES INTO THE HANDS OF PEOPLE THAT NEED THEM.

”

Jill Scott
H.O.P.E. Inc. Executive Director

Rebuilding



Erath County United Way unveiled a direct relief strategy on April 1st, 2020, to assist our local community members. Our efforts resulted in a total of \$45,883.42 in aid for those affected by both the February Winter Storm and COVID-19 relief.

COVID-19 RELIEF- \$24,674.31

The Erath County United Way relief program was an initiative to support the local community members who were facing financial challenges due to the COVID-19 pandemic. The program aimed to alleviate some of the financial burdens many families were experiencing by providing much-needed assistance in rent, utility payments, and food.

The relief program was launched in April 2021, and it quickly gained momentum, with over 280 disbursements being made on behalf of the community. The funds were distributed to landlords, utility companies, and families in need. The program was primarily aimed at assisting with rent, utilities, and food, which are some of the most pressing needs for families who are struggling to make ends meet, during the pandemic.



Thanks to the generosity of donors and volunteers, the Erath County United Way was able to assist 60 households in total. Of these, 44 were able to receive help with their rent payments, 46 received assistance with their utility bills, and 44 were provided with food aid. The program provided a critical lifeline to many families during a challenging time, and the impact of the program is sure to be felt for a long time to come.

WEATHER ASSISTANCE - \$21,209.11

The winter storm that hit your community in February 2021 was a very challenging time. The pandemic had already put a lot of pressure on families, and the storm only made things worse. The storm's impact was widespread, knocking out power and water, and causing plumbing to freeze in hundreds of homes. The resulting leaks caused even more damage and disruption, adding to the community's already heavy burden.

In the midst of all this, it was heartwarming to hear that our community rallied together to help those in need. Local organizations, like the Erath County United Way, were crucial in providing assistance to those most affected. Thanks to their efforts, 34 households were able to receive aid in various forms, including 13 with plumbing repairs, 13 with utilities, and 17 with food.

It is clear that the effects of the storm are still being felt, and recovery will be a slow process. But the resilience and strength of our community came shining through, as people come together to support one another during this difficult time. With continued support and effort, your community will be able to overcome these challenges and emerge stronger than ever before.



Rising from the

Ashes

Last year, the emergency management departments of Erath and Hood County collaborated to provide relief to those affected by the Big L wildfire. Pick up and drop-off locations were designated to facilitate the coordination of resources. The fire burned for over 12 days, devastating over 10,000 acres of land, and resulting in the loss of hundreds of livestock and animals. Volunteer fire departments in the county were stretched to their limits and their lives were in danger. In response, the Erath County Fire Relief Fund was established to assist with the devastation of this disaster. Through our joint efforts, Erath County United Way, Erath County Emergency Management, and local companies and business came together to provide temporary housing, meals, gift cards, and essential supplies to the families and individuals directly impacted.



\$10,241.00
TOTAL RAISED

Erath County United Way holds a Fish Fry as our campaign kick-off every year. This event is one of our biggest campaign events of the year and was a great success in 2022, raising a significant amount of money for Erath County United Way. Every year, the Fish Fry helps to support the important work of Erath County United Way and brings the community together in support of our mission.



We wish to thank TechnipFMC for their continued support in running the drive-thru for our Fish Fry event. Their partnership and contribution are crucial in making the event a success. We appreciate their dedication to our cause and community, and we value their support and partnership.



The Knights of Columbus are the backbone of our Fish Fry event by preparing the food for the entire community. Their servant heart and unwavering dedication to our causes are truly remarkable, and their contribution to our event speaks volumes about their commitment to serving our community. It is an honor to partner with such an amazing group of men, and without their support, this event simply would not be possible.



“ ERATH COUNTY UNITED WAY CAPITAL CAMPAIGN KICKS OFF EVERY YEAR WITH OUR ANNUAL FISH FRY EVENT FEEDING 1000+ PEOPLE YEAR AFTER YEAR. THIS EVENT WOULDN'T BE POSSIBLE WITHOUT THE KNIGHTS OF COLUMBUS COOKING FOR US PLUS ALL OF OUR SPONSORS. THE COMMUNITY CONTINUES TO SUPPORT THIS EVENT AND ERATH COUNTY UNITED WAY WHICH ALLOWS US TO PROVIDE FOR OUR PARTNER AGENCIES. ”

Shelley Cybilland
Fish Fry Chair



2022 Fish Fry Sponsors



These Fish Fry Sponsors help to maximize the impact of your investment in the community, ensuring that your contribution goes further in supporting the causes and programs that matter most.



FISH FRY
SPONSORS



Citizens National Bank
Of Texas
Your Bank Since 1868



FIRST
FINANCIAL
BANK



IN-KIND
DONORS



The
Water Shop



KNIGHTS
OF COLUMBUS

Mayfield
Paper Company



Be Merry & Shine *Bright*



Erath County United Way proudly presented the 3rd Annual 3/4-mile walking trail in the Stephenville City Park, featuring 2 million breathtaking light installations and iconic displays. Lone Star Electric's Christmas Decor expertly transformed the park into a mesmerizing winter wonderland. The Light Up The Night event team consistently strives to improve the guest experience by offering a diverse range of exciting new attractions and fun activities. Our guests enjoyed complimentary Santa pictures Friday night and live entertainment Saturday night. Despite inclement weather causing some schedule adjustments, the park remained open for three weekends in December. As the organization's flagship event, the staff and volunteers of Erath County United Way take great joy in bringing Light Up The Night to our community.

“ THE ERATH COUNTY UNITED WAY IS PROUD TO PARTNER WITH MANY COMMUNITY BUSINESSES, INDIVIDUALS, AND VOLUNTEERS TO BRING THE LIGHT UP THE NIGHT EVENT TO STEPHENVILLE! OVER 5000 PEOPLE OF ALL AGES WALKED THROUGH THE ¾ MILE-WALKING TRAIL ENJOYING THE 2 MILLION CHRISTMAS LIGHTS, MUSIC, AND HOT COCOA! THIS IS AN EVENT THAT EVERYONE LOOKS FORWARD TO AND IT TRULY MAKES THE SEASON SPECIAL WHILE GIVING BACK AND SUPPORTING THE COMMUNITY. ”

Kathy Hampton
Light Up The Night Chair



The *Merriest* Time Of The Year

Without the support of the individuals and businesses in the community who graciously sponsored the event, the success of Light Up The Night would not have been possible, as their generous contributions provided the necessary funds to make the event happen and bring joy to the community.

Winter Wonderland **Mangrum Air Conditioning**

Joy of Christmas
City of Stephenville | Lone Star Electric

The North Pole
Schreiber Foods | McDonalds of North Texas

Rockin Christmas Stage Sponsors
BMY Wealth Management | Circle J Backhoe Service and Construction, Inc. | Prime Metal Buildings

Jolly Saint Nick Santa Sponsor
Prime Metal Buildings

Frosty Fest
Baxter Chemical & Janitorial Supply Co., Inc. | Cody Brister Construction | Cross Timbers Title | Dublin Livestock Auction | Dublin Family Medicine | Patrick Street Pharmacy | Totelcom Fiber | Baskett Mortgage Services | King Title | All Around Cleaners | Clark Real Estate

Making Christmas Memories
Gifford TV & Electronics | BMY | Pates Hardware | InterBank | TexasBank | Riverwalk Laundry | Texas Health Harris Methodist Hospital | Saint Gobain | Easter Heat & Air | First Financial Bank

Ho-Ho Holiday Helper
Hayden Real Estate | Stephenville Sports Rehab | Stephenville Trailers & Trucks | Todd & Robin Fanning | Cross Timbers Family Chiropractic | Smith Garage Doors | Collier Diamond C Ranch

Tiding & Tinsel
HEB

Santa's Elf
DPT Physical Therapy & Performance, PLLC

Star Of Christmas
First Baptist Church | First United Methodist Church

Merry and Bright
Preferred Properties | Tanglewood Pharmacy | Stephenville Printing Co. | Texan Restrooms | Beneath The Surface News | Signs & Designs | Borges Media | Cold Smoke Craft House | Kabota Tractor | HD Electric | B&A Media | Technip FMC | Peacocks

School Donation Ticket Sponsors
Woods Furniture | Wellington State Bank | Bruner Motors | McCoys | Members Trust

Partner Agency Donations Ticket Sponsor
F&M Bank

Local Businesses Spread Holiday Cheer with Ticket Donations



Local businesses in Stephenville, Texas have come together to spread holiday cheer in the community by donating tickets to our annual Light Up The Night event. *Bruner Auto Family, Members Trust of Southwest Federal Credit Union, Wellington State Bank, Woods Furniture & Mattress Gallery, and McCoy's Building Supply* have all contributed ticket donations to various schools and organizations in the area.

Bruner Auto Family generously donated tickets to *Henderson Junior High, Gilbert Intermediate, Hook Elementary, and Dublin Elementary School*, while **Members Trust of Southwest Federal Credit Union** donated to *Chamberlin Elementary School*. **Wellington State Bank** donated tickets to *Central Elementary*, and **Woods Furniture & Mattress Gallery** contributed tickets to *Bluff Dale ISD, Huckabay ISD, Lingleville ISD, Morgan Mill ISD, and Three Way ISD*.

In addition, **McCoy's Building Supply** made ticket donations to *White Horse Christian Academy, Huston Academy, Stephenville Christian School, Stephenville Faith Homeschool Page, and Faith Preschool*. **F&M Bank** also contributed by donating tickets to all of Erath County United Way's 16 partner agencies.

Erath County United Way's partner agencies include *Basic Needs, CASA, Cross Timbers Family Services, Disabled American Veterans Chapter 234, Dublin Goodfellows, Erath County 4-H, Erath County Child Welfare Board, Meals on Wheels of Erath County, HOPE, Inc., T.R.E.A.T. Riding, The Love Basket, Paluxy River Children's Advocacy Center, Rainbow Room, Star Council on Substance Abuse, Stephenville School Supply Project, and Treehouse Afterschool Program*.

This year's event was made possible thanks to the generosity of local businesses who came together to spread joy and holiday cheer in the community. To top it off, **McDonald's of North Texas** provided food for the final night of the event, adding to the excitement and festivities. Erath County United Way expresses their gratitude to McDonald's of North Texas and all the local businesses who contributed to make the event a success.



A Look at Top Sponsorship, Live Entertainment, and Santa Pictures

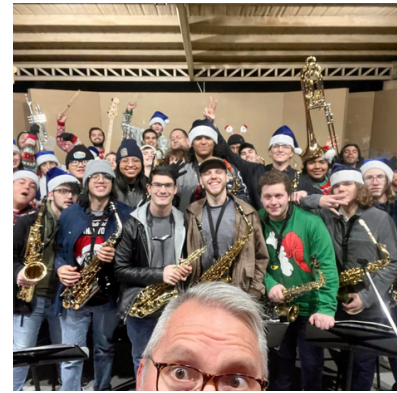


On behalf of our Light Up The Night team, we would like to express our deepest gratitude for our title sponsor, Mangrum Air Conditioning's, generous sponsorship of our event. Your contribution has been instrumental in making our event a great success, and we cannot thank you enough for your support. Your sponsorship as our highest sponsor has allowed us to provide a high-quality experience for our community, that wouldn't be possible without your support.

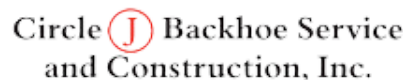
Thanks to the sponsorship provided by Prime Metal Buildings, the Santa pictures were available every Friday for the duration of the event. Families were able to come to the event and have their children's pictures taken with Santa free of charge.



In addition to sponsoring the Santa pictures, Prime Metal Buildings, together with BMY Wealth Management and Circle J Backhoe Service and Construction, Inc., have also contributed to the event by sponsoring the event stage every Saturday. The stage was the focal point of Saturday nights at Light Up The Night, providing a platform for performers and musicians to entertain the crowds with live music, and dance performances.



In conclusion, the sponsorship provided by Mangrum Air Conditioning, Prime Metal Buildings, BMY Wealth Management, and Circle J Backhoe Service and Construction, Inc., for the Light Up the Night event, is a testament to their commitment to supporting the local community and contributing to the success of local events. Through their sponsorships, they are helping to make the event more accessible and enjoyable for families. Their partnership highlights the importance of collaboration and working together to achieve common goals, and is a shining example of what can be achieved when businesses and individuals come together to support their community.







“ I BELIEVE IT IS IMPORTANT TO GIVE BACK IN TIME. TO BE ABLE TO SEE THE SMILE AT LIGHT UP THE NIGHT, HAND OUT FOOD AT LOCAL PANTRIES, OR ASSIST OUR LOCAL FIRE DEPARTMENTS WHEN THEY ARE FACED WITH THE LARGEST FIRE IN RECENT MEMORY, WE ARE HAPPY TO VOLUNTEER. IT HELPS KEEP WHAT WE ARE DOING RELEVANT AND IMPORTANT. ”

Melissa Divin
Board President



2022 CAMPAIGN CABINET

PRESIDENT

MELISSA DIVIN

Melissa Divin Consulting

VICE PRESIDENT/CAMPAIGN CHAIR

NICOLE BASKETT

Baskett Mortgage Services, LLC

The Erath County United Way Campaign Cabinet consists of board members and community volunteers who serve as liaisons with various business sectors to provide resources and assistance to the Campaign Coordinators, employees at local companies that host workplace giving campaigns.

CAMPAIGN CO-CHAIR

MIKE MELTON

Bruner Auto Family

KATRINA BRISTER

Dublin ISD

KATHERINE DEMETRUCK

TexasBank

MARCY DERRICK

Texas Health Resources

JANETTE GOODMAN

InterBank

KATHY HAMPTON

Stephenville ISD

SAMANTHA OSMOTHERLY

Schreiber Foods

JAMIE SANDERSON

First Financial Bank

SHELLEY GILLILAND

Lone Star Ag Credit

AMY TROUTMAN

F&M BANK

BOBBY WADDELL

Tarleton State University

SHEILA WILLIAMS

Easter Heat & Air

CONNIE WOOLEY

TexasBank

LISA SCROGGINS

EXECUTIVE DIRECTOR

2022 COMMITTEES



We are grateful for our dedicated volunteers at Erath County United Way. Thank you to those listed below, and to all who contributed their time and skills to our campaign, agency reviews, and committees. Your commitment and support are essential to our success in serving those in need in our community.

Audit Review Committee

Chair: Melissa Divin

Jimmy Chew
Kathy Hampton
Jamie Sanderson
Connie Wooley

Agency Allocations Committee

Chair: Staci King

Chair: Jimmy Chew

Nicole Baskett
Mark Brown
Cristina Castillo
Marcy Derrick
Melissa Divin
Chad Gilley
Shelley Gilliland
Kathy Hampton
Mike Melton
Samantha Osmotherly
Michael Prather
Jamie Sanderson
Amy Troutman
Connie Wooley

By-laws Committee

Chair: Connie Wooley

Cristina Castillo
Marcy Derrick
Melissa Divin
Samantha Osmotherly
David Perez

Scholarship Committee

Chair: Kathy Hampton

Shelley Gilliland
Michael Prather
Amy Troutman
Connie Wooley

COVID-19 Response & Relief Committee

Shelley Barton
Nicole Baskett
Shelley Gilliland
Andrew Huf
Tommy Keith
Staci King

Weather Assistance Committee

Melissa Divin
Shelley Gilliland
David Perez
Michael Prather
Connie Wooley

Nominations Committee

Chair: Shelley Gilliland

Nicole Baskett
Kathy Hampton
Michael Prather
Connie Wooley

Fish Fry Committee

Chair: Shelley Gilliland

Mark Brown
Cristina Castillo
Marcy Derrick
Chad Gilley
Kathy Hampton
Staci King
Mike Melton
Samantha Osmotherly
David Perez
Michael Prather
Amy Troutman
Connie Wooley

Light Up The Night Committee

Chair: Kathy Hampton

Nicole Baskett
Mark Brown
Cristina Castillo
Jimmy Chew
Marcy Derrick
Melissa Divin
Chad Gilley
Shelley Gilliland
Staci King
Mike Melton
Samantha Osmotherly
David Perez
Michael Prather
Jamie Sanderson

TOP 20

Workplace Campaigns



- SAINT-GOBAIN
- STEPHENVILLE ISD
- EGS/APPLETON
- HEB
- INTERBANK
- TECHNIPFMC
- MANGRUM AIR CONDITIONING
- TEXAS HEALTH RESOURCES
- BRUNER AUTO FAMILY
- SCHREIBER FOODS
- FIRST FINANCIAL BANK
- CIRCLE J BACKHOE
- CITIZENS NATIONAL BANK
- LUMINANT/VISTRA ENERGY
- TEXASBANK
- CITY OF STEPHENVILLE
- DUBLIN ISD
- ATMOS ENERGY
- BMY WEALTH MANAGEMENT
- F&M BANK

Leadership Giving Circle

Leadership Givers are Erath County United Way's most generous supporters and are an integral part of our efforts to solve community problems and bring measurable, lasting change to the lives of thousands of residents in our community each year.

2022 LEADERSHIP GIVERS

DONATING \$500 OR MORE TO ERATH COUNTY UNITED WAY

Dr. Robert & Jane Barberee
Jessica & Blayne Baley
Shelley Barton
Mark Brown
Gayla & Mike Boucher
Dawn & Danielle Boyd
Glynn Brownlee
Marie & Brad Burleson
Linda & Greg Bruner
Judge Alfonso Campos
David Cardona
Monty Champion
Betty & Jimmy Chew
Todd Cochran
Marion Cole
Pamela Collins
Dr. Joe Cude
Monica DeLaCerde
Marcy & Greg Derrick
Lesley & David DeJong
Marilyn & Willey DeJong
July Danley
Dr. Kelly & Tawnya Doggett
Jennifer Dunsworth
Xalli & Dale Dorothy
Dr. Bill & Nanette Evans
Cliff Foy
Christopher T. Leu & Melissa J. Garretson
Lacey & Chad Gilley
Shelley & Lance Gilliland
Janette Goodman
Melisa Gonzales
Eddie Guajardo
Raul Gutierrez

Lesley & James David Halford
Chelsea Hansen
Frank Hernandez
Sheila Hoelscher
Misty Hollingsworth
Staci & Jason King
J.J. Hampton, Ricky & Kason Price
Hardy & Carolyn Hampton
Kathy Hampton
Penny Hampton
Laurie & Joe Bob Huddleston
Debbie Hummel
Staci James
Heather H. Jones
Dr. Kevin & Dr. Trevor Kerr
Rose Ann & David Kincannon
Miguel Lopez
Kristi McKinney
McNeill Family
Kelly & Mitch Magin
Jennifer Martin
Tammy & Chad Miller
Cindy & Matt Miller
William Medart
Alisa Melton
Ronda & Mike Melton
Hortencia Mendez
Melanie Musick
Seth Moore
Heather & Chris Mosely
Cynthia & Hal O'Neal
Samantha Osmotherly
Vickie & Cliff Pettit
April & Michael Prather

Daresa & Matt Rhine
Shannon Prescott
Dr. Janis & Richard Petronis
Crystal Reed
Daresa & Matt Rhine
Jennifer & Darly Salyards
Jamie & Matt Sanderson
Jim & Lisa Scroggins
Ashley Sharp
Ana Spencer
Dewayne & Connie Snider
Dr. Kenneth & Diane Stokes
Gary & Jana Sult
Lacey & Trent Tidwell
Dr. Frank & Kathy Terrell
Barbara Terrell
John & Mary Jean Terrill
David & Margaret Tomlinson
Ester & James Tucker
Bill & Sheryl Wells
Connie & John Wooley
James Wood
Wade Tanner
Ron Thigpen
Dr. Matt & Fara Underwood
Heidi & Bert Velsen
Kathleen Wellman
Samantha Williams
Destiney Williamson
Sherry Wyly
David Zarate



WHO ARE WE

In 2021, Texas Health Resources awarded a \$599,562 grant to help Erath County organizations address crucial needs in their communities, including depression and food insecurity. The grant benefitted from the work of Erath County United Way, in close collaboration with Tarleton State University and other community partners.

Awarded by Texas Health Community Impact, the grant helped fund the initiative known as Erath County Community Bridges, which is aimed at decreasing levels of anxiety and depression, increasing food security, and enhancing resource navigation services for low-income citizens aged 40 and over in Erath County zip codes 76401, 76402 and 76446. These were identified by Texas Health Community Impact as the areas with the best opportunities to effect change.

The program objectives for Erath County's grant are two-fold among low-income individuals age 40 and over: decrease depression and anxiety as measured by standard assessments of patient mental health and general anxiety disorders, and increase food security by 10% as measured by the U.S. Department of Agriculture food security questionnaire.

To do this, Erath County Community Bridges created a Telehealth Institute through Tarleton State University; funding a navigator position to help coordinate the efforts of the collaborating organizations as they collectively help citizens, enhance food pantries through healthier food options and offer financial literacy education to patrons.

In addition to Erath County United Way and Tarleton State University, Erath County Community Bridges partners with:

- AgriLife Erath County
- Basic Needs
- Pantry and More
- Grace Place
- Hope Inc.
- The LOVE Basket
- Meals on Wheels - Erath County
- Stephenville Senior Citizen Center
- Compassion Counseling

2022 IMPACT



1,150

CLIENTS

435+

HOUSEHOLDS

1,700+

REFERRALS



REFERRALS BY SOURCE

832

FOOD PANTRIES

126

COUNSELING

192

OTHER ORGANIZATIONS

PRIMARY CAUSE AREAS



79.17% | Food Insecurity

20.79% | Depression

22.89% | Anxiety

GOVERNMENT ASSISTANCE PROGRAM

Erath County Community Bridges staff provide assistance to individuals who need assistance with government applications for programs like SNAP and Medicaid. By offering assistance with these government applications, our team is helping to ensure that individuals in our community have access to important resources that can help them meet their basic needs and stay healthy.



SCAN THE QR CODE
TO LEARN MORE



GOING

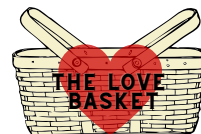
FURTHER



Erath County Community Bridges is proud to continue the work started in 2021, and we are committed to addressing the critical needs in our community. Erath County Community Bridges was awarded funding by the Erath County Commissioners Court, through ARPA funds. We are excited to be able to continue serving the residents of Erath County, now with no age restrictions, for the next 2 years. In addition to expanding and enhancing life-sustaining nourishment for individuals in need, Erath County Community Bridges partners will continue to empower individuals and families by increasing food accessibility, while providing services for mental wellness to those in Erath County. This year, we have expanded our program services to include food access, counseling services, budget planning, local transportation, medical transportation assistance, case management, assistance with SNAP applications, and support with other government applications.

2023

COMMUNITY
PARTNERS



ERATH COUNTY

**United
Way**



WEBSITE

www.erathcountyuw.org



CONTACT US

(254)965-4429



ADDRESS

150 N Harbin Dr. Suite 309
Stephenville, Texas 76401